

# Isolator<sup>®</sup> Multifunctional Pen



*Pace. Sense.  
Stimulate. Ablate.*

**AtriCure**

## PACE

### OBJECTIVE

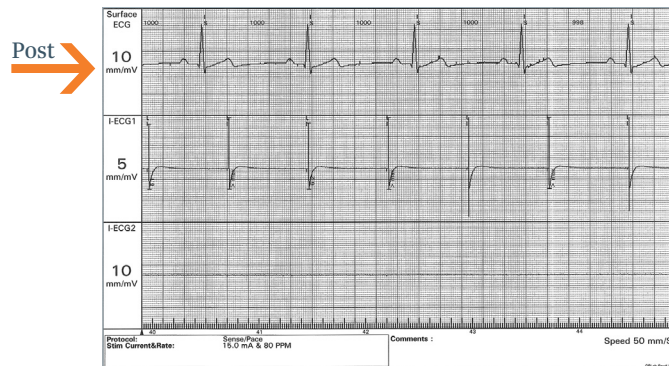
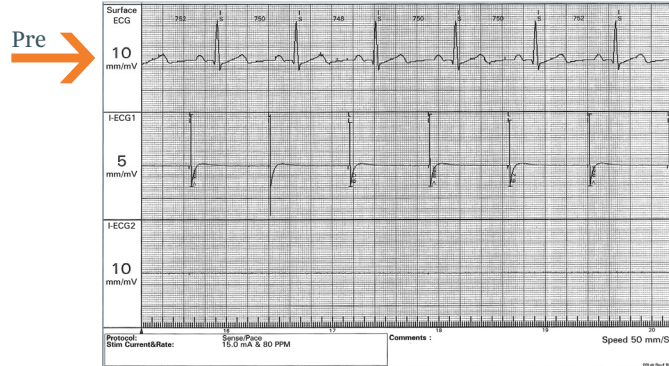
Confirm exit block of focal stimuli from the atrial cuff to the atrium.

### Pre-ablation

Using the multifunctional pen, establish atrial capture by placing the pen at various atrial cuff locations—superior, bifurcation, inferior (lateral to the proposed ablation line) documenting those that elicit a corresponding atrial pacing rate change.

### Post-ablation

Place the pen at all previously identified atrial cuff locations to confirm that they no longer provoke a corresponding atrial rate change.



## SENSE

### OBJECTIVE

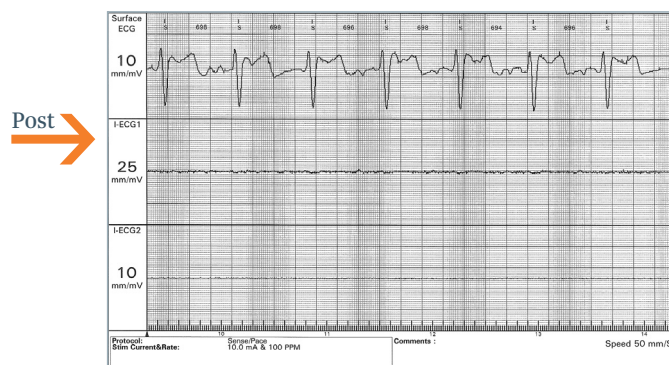
Confirm entrance block of atrial cuff potentials through evaluation of baseline waveforms.

### Pre-ablation

Using the multifunctional pen, identify and record baseline ECG potentials along the left and right atrial cuff.

### Post-ablation

Reposition pen at previously identified baseline locations to confirm absence of potentials or slow potentials disassociated from left atrial activity.



## STIM

### OBJECTIVE

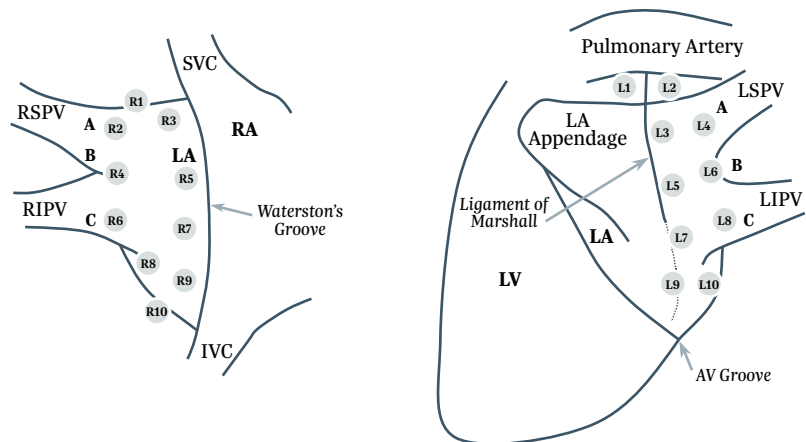
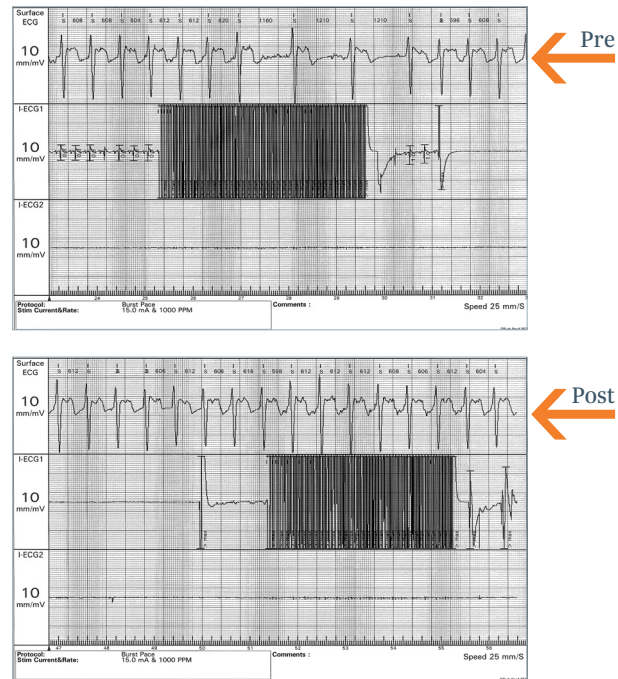
Confirm inactivity of parasympathetic responses associated with intrinsic cardiac nervous system utilizing high frequency stimulation (HFS).

### Pre-ablation

Using the multifunctional pen, stimulate various locations on the atrial epicardial surface noting those sites that elicit a vagal response (significantly slowing intrinsic heart rate).

### Post-ablation

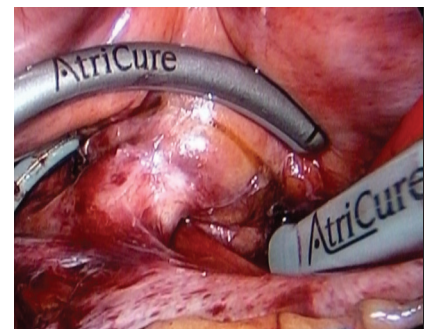
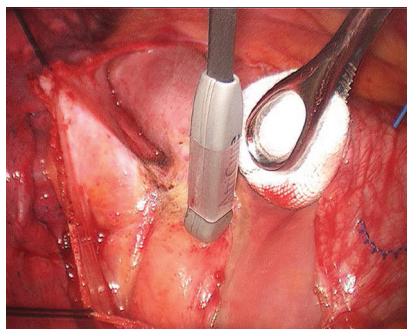
Return the pen to previously identified sites to confirm that HFS no longer initiates a vagal response.



## ABLATE

### OBJECTIVE

Create precise cardiac lesions with bipolar RF energy. Use the multifunctional pen or Isolator Synergy™ clamp to help achieve desired outcomes.



AtriCure Isolator Bipolar Linear Pens	
Device	Product Code
Isolator Multifunctional Pen, 19 cm	MAX3
Isolator Long Pen TT	MAX5

The Isolator™ pen is a sterile, single use electrosurgery device intended to ablate cardiac tissue during cardiac surgery using radiofrequency (RF) energy when connected directly to the ASU or ASB3 in Ablation mode. The Isolator™ pen may be used for temporary cardiac pacing, sensing, recording, and stimulation during the evaluation of cardiac arrhythmias during surgery when connected to a temporary external cardiac pacemaker or recording device.

Please review the Instructions for Use for a complete listing of contraindications, warnings, precautions and potential adverse events prior to using these devices.

**ATRICURE EUROPE B.V.**

De Entree 260

1101 EE Amsterdam

Pays-Bas

Tél. : +31 (0) 20-7005560

Fax : +31 (0) 20-7005561

SalesSupportEU@AtriCure.com

europe.atricure.com

PM-EU-2370A-1224-G

**AtriCure**