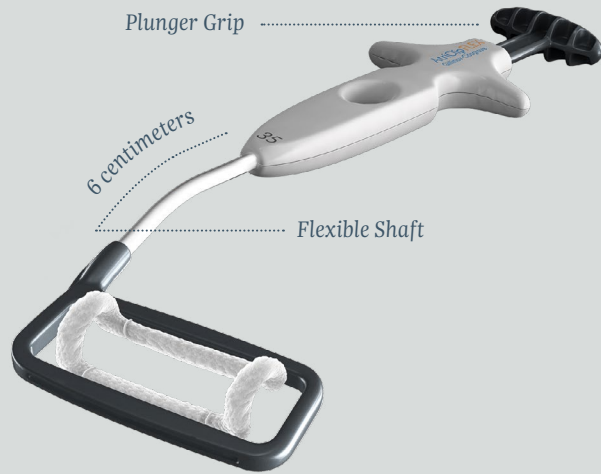


## ATRICLIP FLEX FEATURES\*



## LAYERS OF THE ATRICLIP



\*The AtriClip FLEX image shows the device with the shaft in a bent position. This device comes packaged in a straight position.

### References

1. Salzberg, S.P., et al. (2008). Surgical left atrial appendage occlusion: evaluation of a novel device with magnetic resonance imaging. *Eur J Cardiothorac Surg*, 34:766–70.
2. Salzberg S, et al. (2010). Left atrial appendage clip occlusion: early clinical results. *J Thorac Cardiovasc Surg*, 139(5):1269–74.
3. Fumoto H, et al. (2008). A novel device for left atrial appendage exclusion: the third-generation atrial exclusion device. *J Thorac Cardiovasc Surg*, 136(4):1019–27.
4. Kamohara K, et al. (2005). A novel device for left atrial appendage exclusion. *J Thoracic Cardiovasc Surg*, 130(6):1639–44.
5. Ailawadi G, et al. (2011). Exclusion of the left atrial appendage with a novel device: early results of a multicenter trial. *J Thorac Cardiovasc Surg*, 142(5):1002–9.

AtriClip LAA Exclusion System is indicated for open occlusion of the heart's left atrial appendage.

Please review the Instructions for Use for a complete listing of contraindications, warnings, precautions and potential adverse events prior to using these devices.

# AtriClip® FLEX

A More Flexible Solution for the Most Widely Placed LAA Exclusion Device in the World



### ATRICURE EUROPE B.V.

De Entree 260  
1101 EE Amsterdam  
Pays-Bas  
Tél. : +31 (0) 20-7005560  
Fax : +31 (0) 20-7005561  
SalesSupportEU@AtriCure.com  
europe.atricure.com  
PM-EU-2367A-1224-G

AtriCure

AtriCure

# Why Use the AtriClip Left Atrial Appendage Exclusion System by AtriCure?

## 1 / LAA ISOLATION

In preclinical and clinical studies, the AtriClip device securely sealed the LAA orifice resulting in a smooth endothelial tissue surface within 90 days.<sup>1,2,3</sup>

## 2 / NON-PIERCING

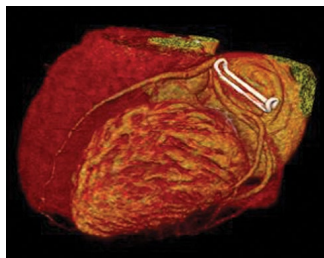
Non-piercing application occludes the LAA. Woven polyester fabric covering promotes tissue ingrowth and promotes complete encapsulation in 90 days from implant, without erosion of adjacent structures.<sup>1,4</sup>

## 3 / EXCLUDE – SAFETY

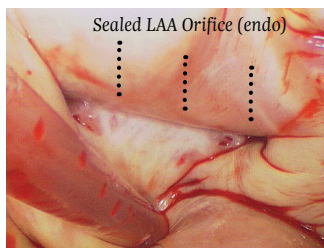
The AtriClip device provides safe and atraumatic exclusion of the LAA during open cardiac surgery.<sup>5</sup>

## 4 / CUSTOM FIT TO SPECIFIC ANATOMY

AtriClip devices are custom fitted to the LAA anatomy and are available in four sizes, including 35 mm, 40 mm, 45 mm and 50 mm.<sup>5</sup>

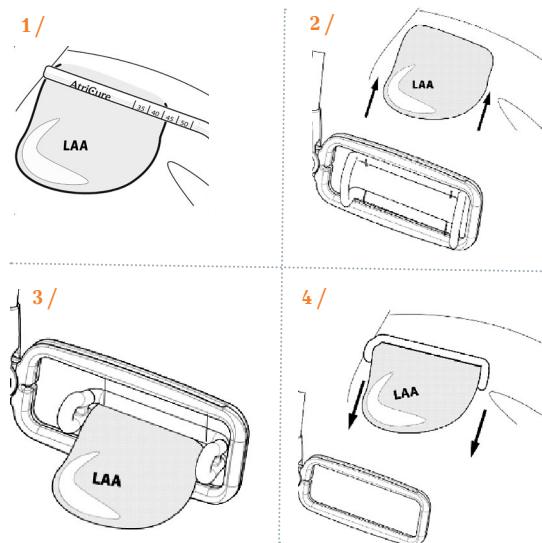


CT confirmation scan at three months



Endocardial View after implantation

### MEASURING THE LAA AND PLACING THE CLIP



## AtriClip Gillinov-Cosgrove® LAA Exclusion System Devices



### Flex

35 mm AtriClip ACH 235    45 mm AtriClip ACH 245

40 mm AtriClip ACH 240    50 mm AtriClip ACH 250



### Standard

35 mm AtriClip ACH 135    45 mm AtriClip ACH 145

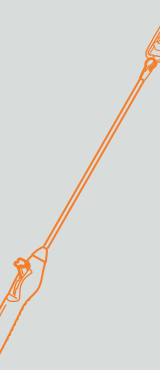
40 mm AtriClip ACH 140    50 mm AtriClip ACH 150



### Pro

35 mm AtriClip PRO 135    45 mm AtriClip PRO 145

40 mm AtriClip PRO 140    50 mm AtriClip PRO 150



### Long

35 mm AtriClip LAA035    45 mm AtriClip LAA045

40 mm AtriClip LAA040    50 mm AtriClip LAA050