

AtriClip FLEX

A More Flexible Solution for the Most Widely Placed LAA Exclusion Device in the World

>98%
successful LAA
exclusion¹

AtriCure's AtriClip products are the most widely sold Left Atrial Appendage (LAA) management devices worldwide.

Epicardial Exclusion

- Implant is not in the blood stream
- Ischemic injury electrically isolates the LAA
- Atrophy and resorption of the LAA

Dynamic Closing Force

Continuous closing force maintains LAA exclusion throughout changes to the tissue caused by ischemia

Parallel / Linear Closing

Minimized occurrence of tissue folds with optimal apposition of tissue along long axis of LAA ostia

Tissue Compression / Atraumatic

No cutting, non-piercing, and atraumatic compression reduces risk of tissue tearing and bleeding

Stroke* risk reduction

Indicated for use in patients at high risk of thromboembolism for whom left atrial appendage exclusion is warranted



Now recommended **Class I**
by ESC/EACTS 2024
Recommendations

*Originated from the LAA

Why Use the AtriClip Left Atrial Appendage Exclusion System by AtriCure?

1 LAA ISOLATION

In preclinical and clinical studies, the AtriClip device securely sealed the LAA orifice resulting in a smooth endothelial tissue surface within 90 days.^{1,2,3}

2 NON-PIERCING

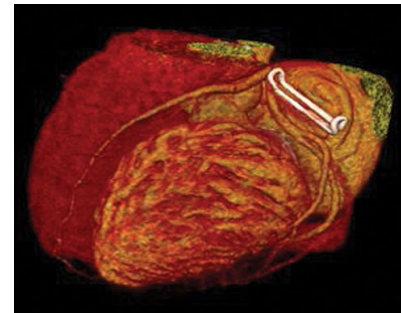
Non-piercing application occludes the LAA. Woven polyester fabric covering promotes tissue ingrowth and promotes complete encapsulation in 90 days from implant, without erosion of adjacent structures.^{1,4}

3 EXCLUDE – SAFETY

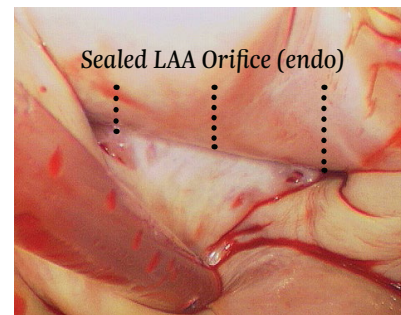
The AtriClip device provides safe and atraumatic exclusion of the LAA during open cardiac surgery.⁵

4 CUSTOM FIT TO SPECIFIC ANATOMY

AtriClip devices are custom fitted to the LAA anatomy and are available in four sizes, including 35 mm, 40 mm, 45 mm and 50 mm.⁵

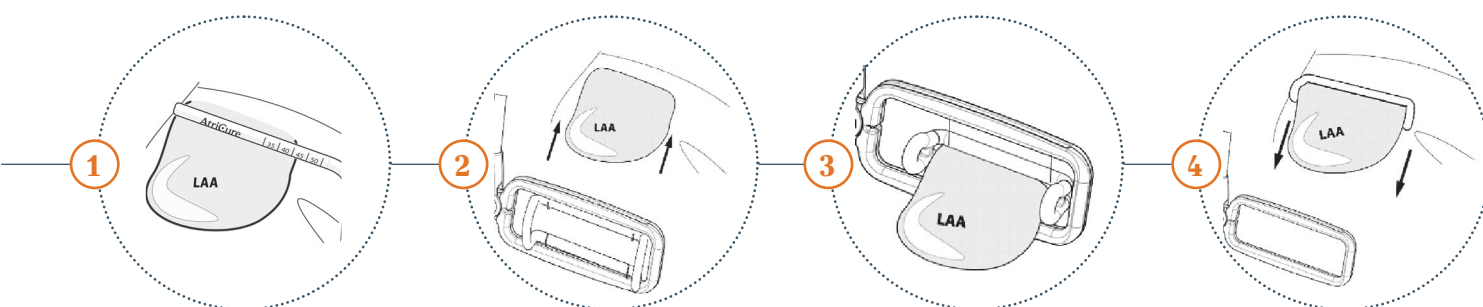


CT confirmation scan at
three months



Endocardial View after
implantation

MEASURING THE LAA AND PLACING THE CLIP



Open accesses

AtriClip FLEX

Features*

- Plunger grip
- 6 cm flexible shaft
- Available in four sizes

Layers of the AtriClip

- Woven polyester fabric covering
- Titanium tube
- Nitinol spring



* The AtriClip FLEX image shows the device with the shaft in a bent position. This device comes packaged in a straight position.

AtriClip FLEX

Device	Size
ACH 235	35 mm
ACH 240	40 mm
ACH 245	45 mm
ACH 250	50 mm

Selection device
CGG

References

1. Mean closure rate among the 3 studies is 98.1% per data on file at AtriCure, Inc. Ailawadi G. et al. J Thorac Cardiovasc Surg 2011;142:1002–9, 1009.e1; Gerdisch MW. et al. Innovations (Phila). 2022;17(6):463-470; Cartledge R et al., Interactive CardioVascular and Thoracic Surgery 34 (2022) 548–555
2. Salzberg, S.P., et al. (2008). Surgical left atrial appendage occlusion: evaluation of a novel device with magnetic resonance imaging. Eur J Cardiothorac Surg, 34:766–70.
3. Salzberg S, et al. (2010). Left atrial appendage clip occlusion: early clinical results. J Thorac Cardiovasc Surg, 139(5):1269–74.
4. Fumoto H, et al. (2008). A novel device for left atrial appendage exclusion: the third-generation atrial exclusion device. J Thorac Cardiovasc Surg, 136(4):1019–27.
5. Kamohara K, et al. (2005). A novel device for left atrial appendage exclusion. J Thoracic Cardiovasc Surg, 130(6):1639–44.
6. Ailawadi G, et al. (2011). Exclusion of the left atrial appendage with a novel device: early results of a multicenter trial. J Thorac Cardiovasc Surg, 142(5):1002–9.

The AtriClip LAA Exclusion System is indicated for use in patients at high risk of thromboembolism for whom left atrial appendage exclusion is warranted.

Please review the Instructions for Use for a complete listing of contraindications, warnings, precautions and potential adverse events prior to using these devices.

ATRICURE EUROPE B.V.

De Entree 260
1101 EE Amsterdam
Netherlands
Tel: +31 (0) 20-7005560
Fax: +31 (0) 20-7005561
SalesSupportEU@AtriCure.com
Europe.AtriCure.com

© AtriCure, Inc.
PM-EU-2373B-0127-G

AtriCure